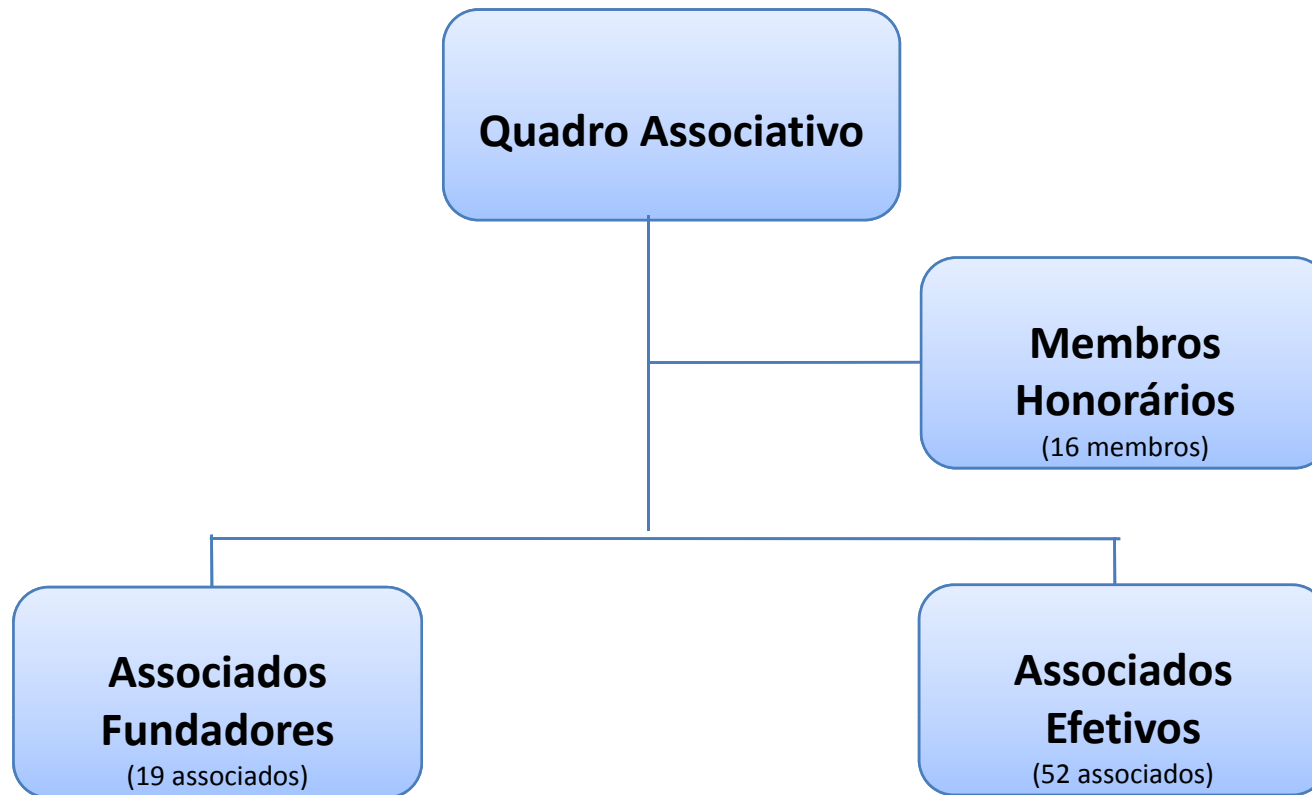


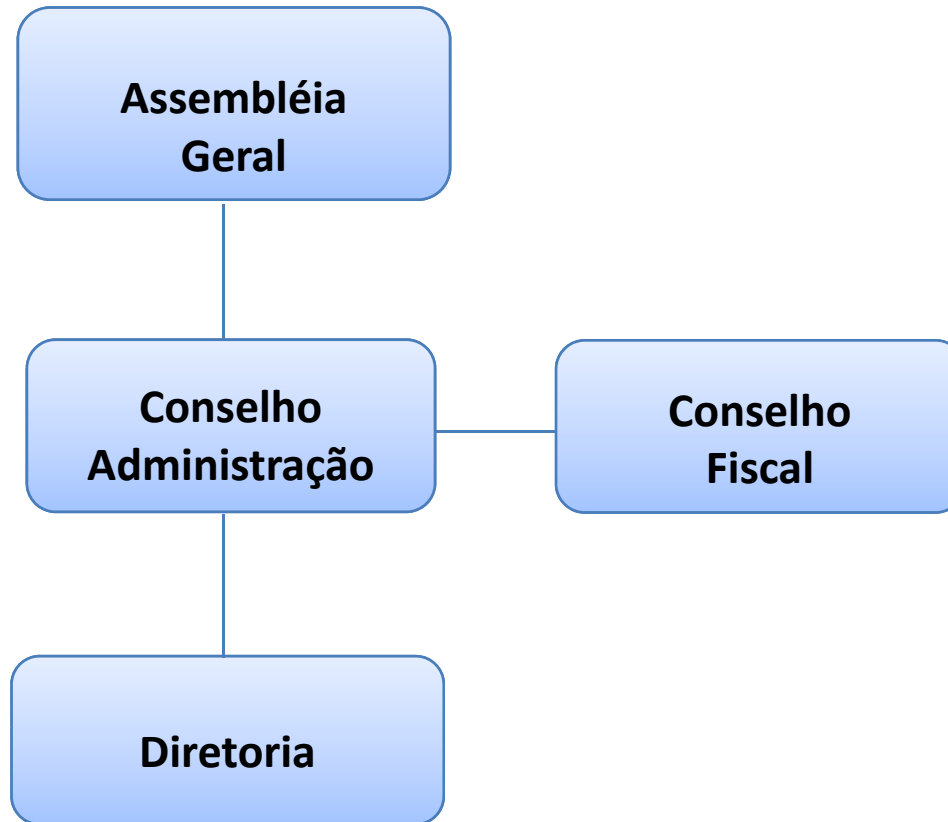
# Assembléia Geral – Órgão Deliberativo



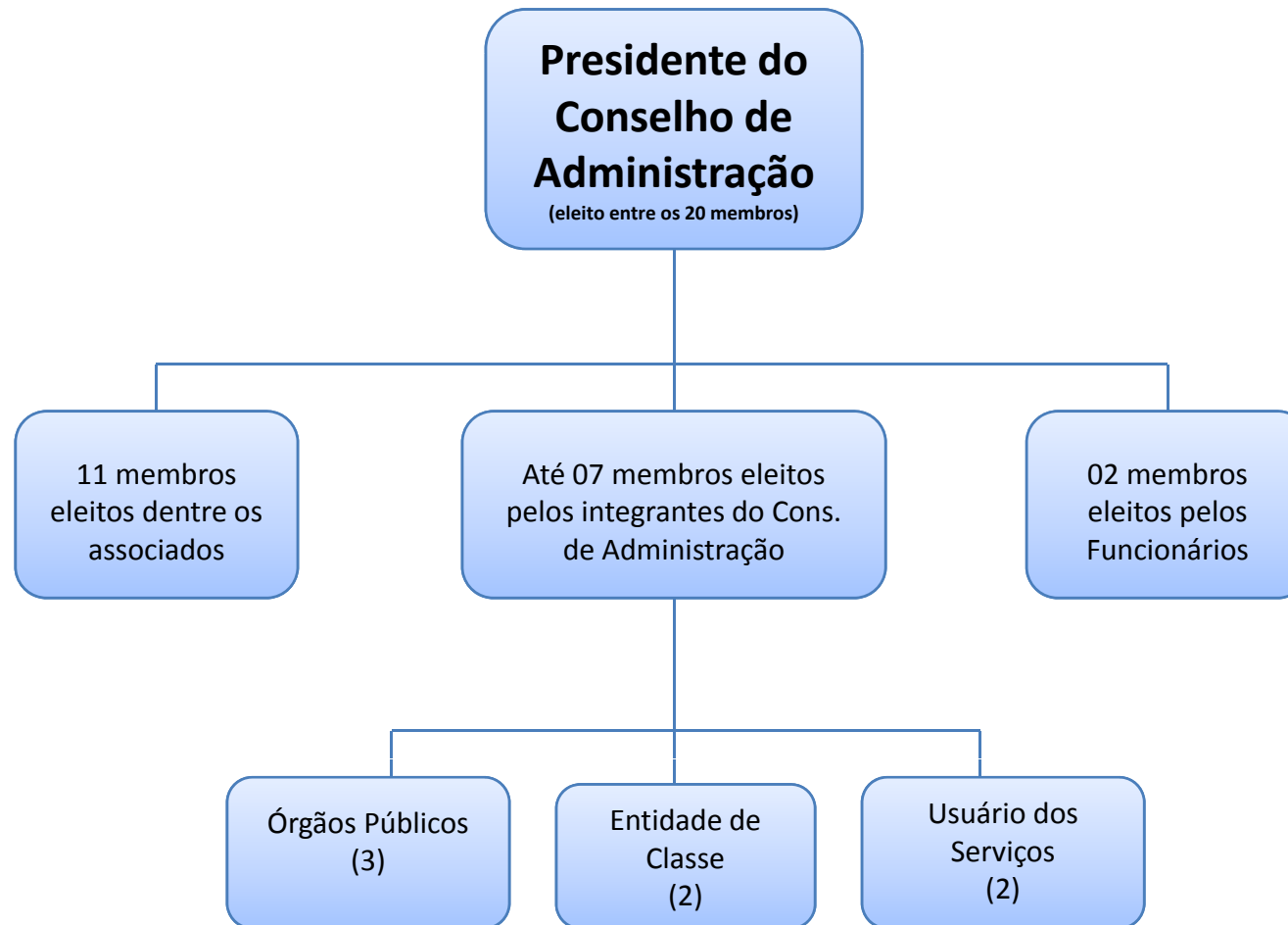
# Órgãos Estatutários



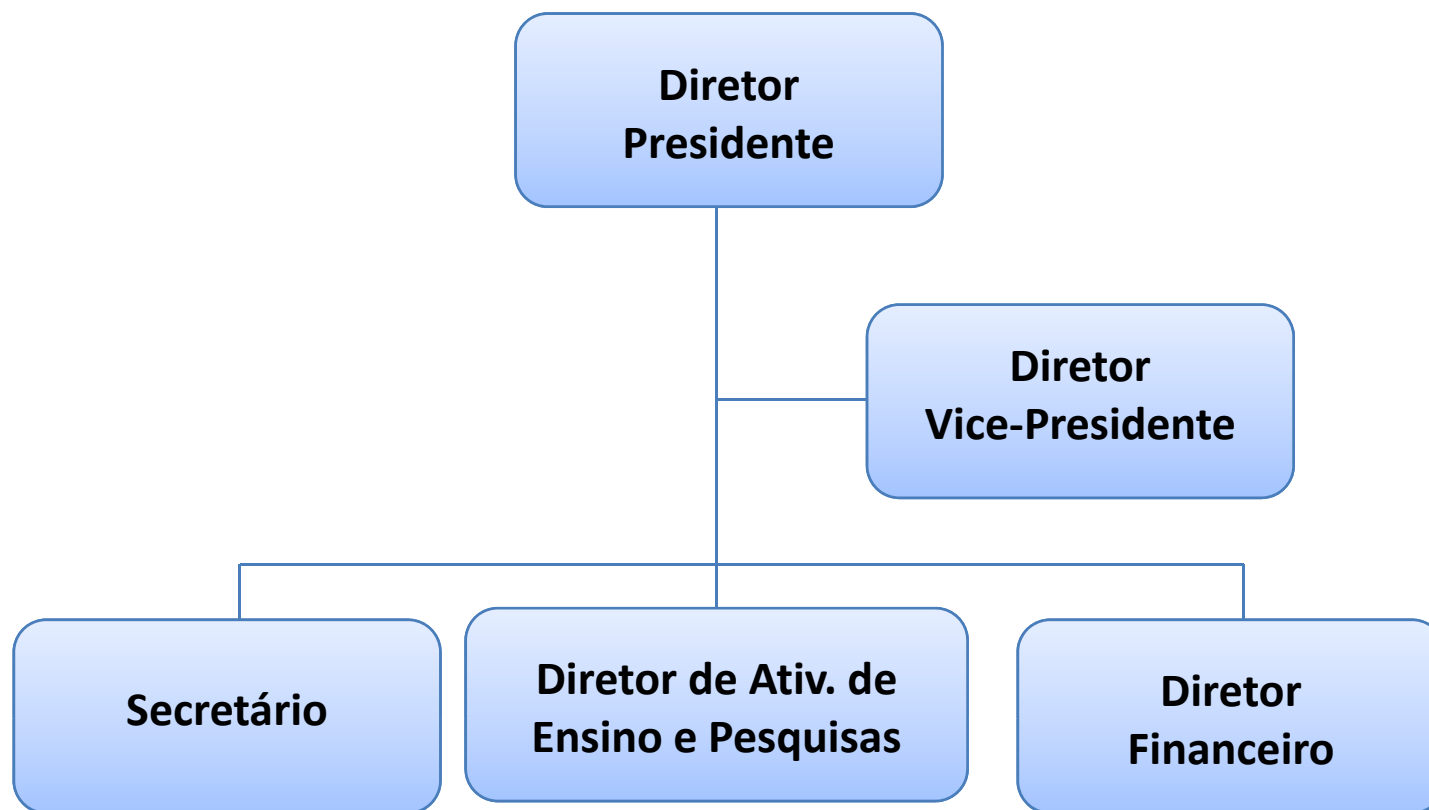
Centro de Estudos e Pesquisas  
"Dr. João Amorim"



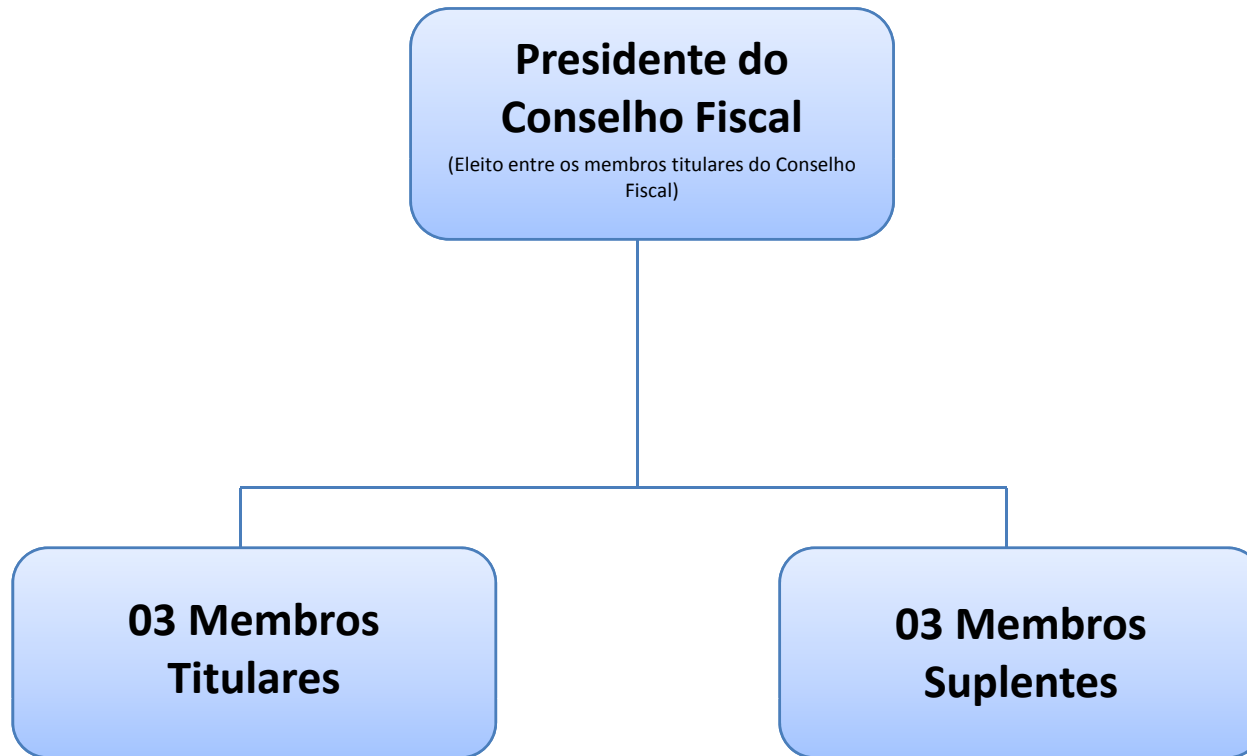
# Conselho de Administração (até 20 membros)



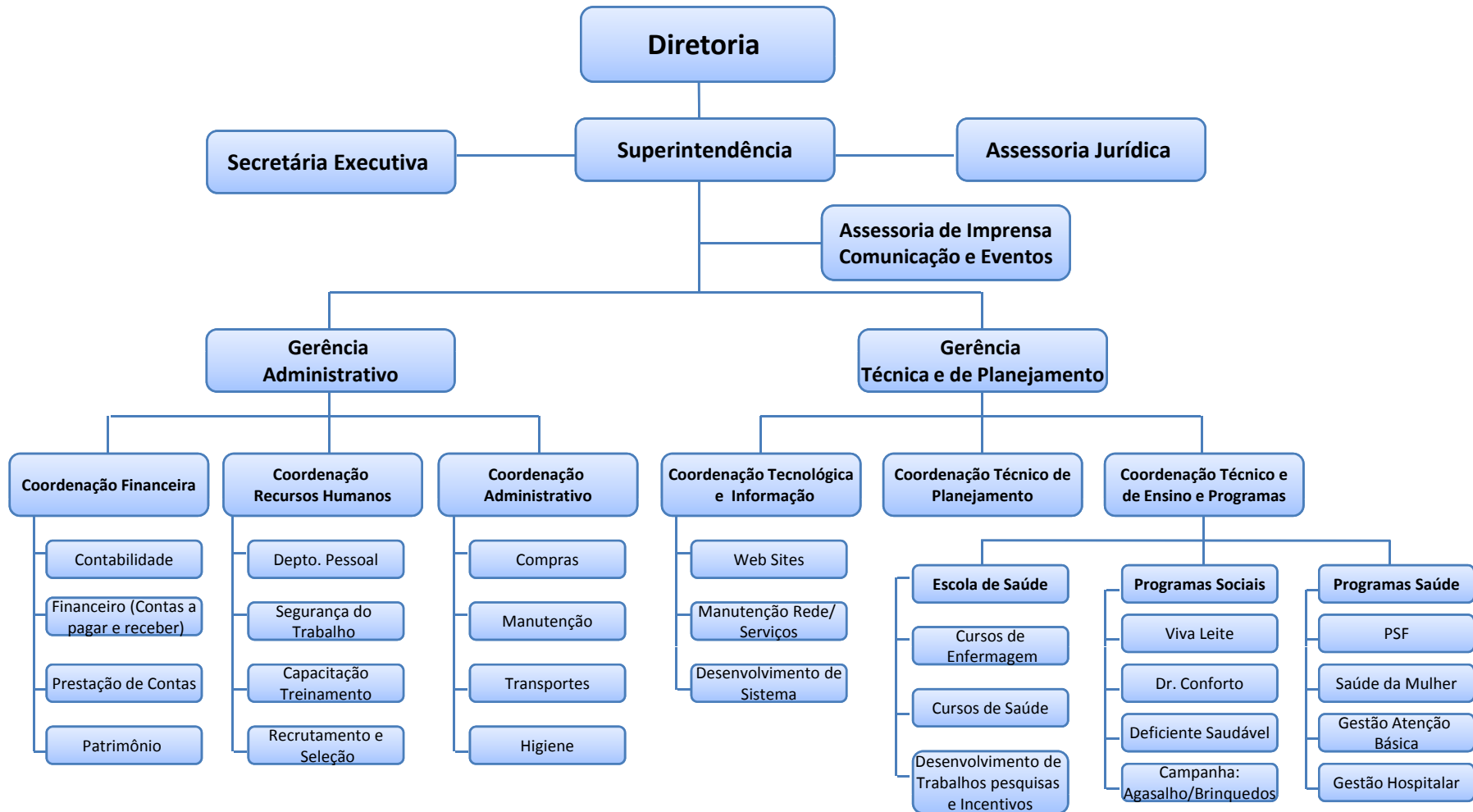
# Diretoria Executiva



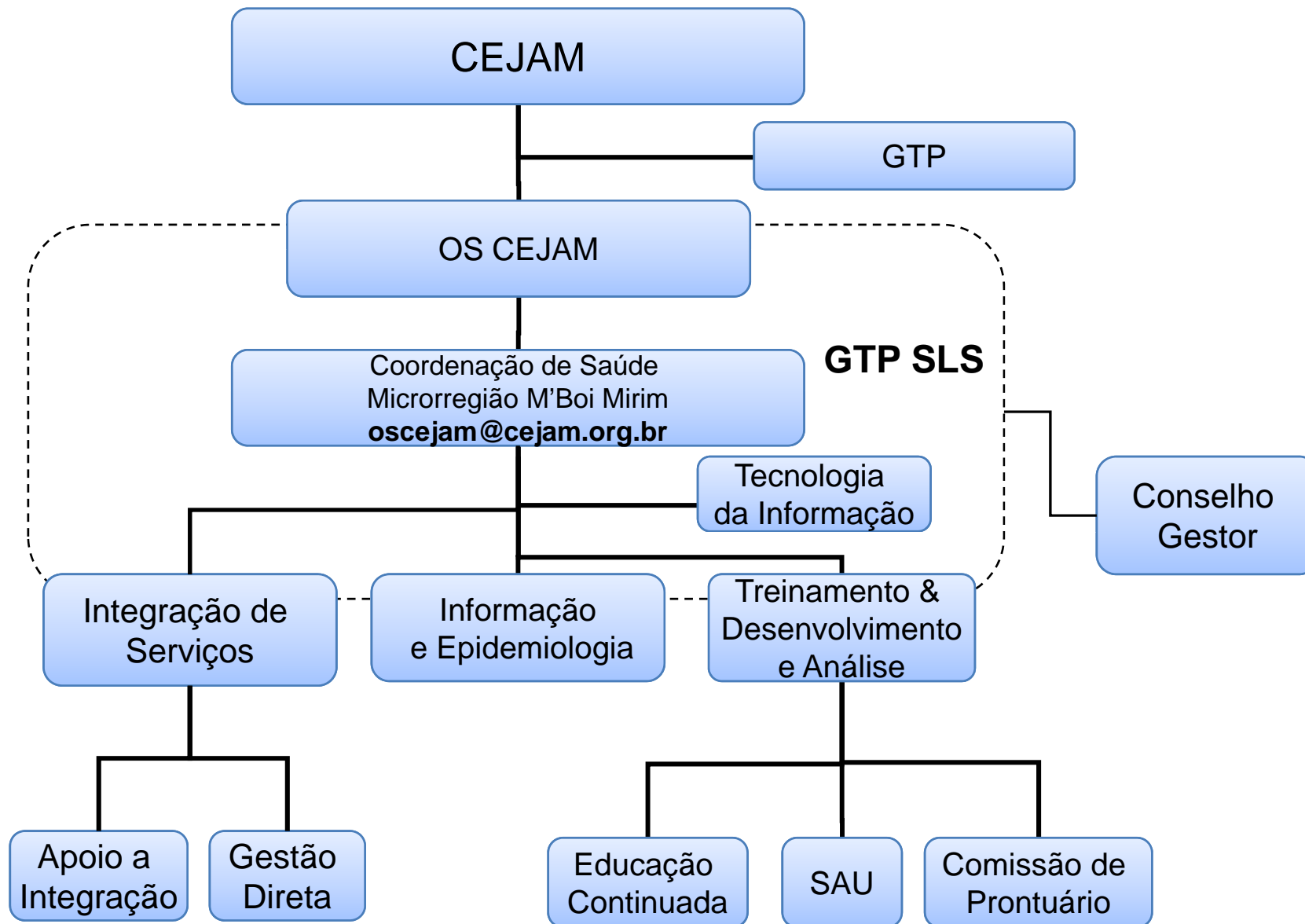
# Conselho Fiscal (06 membros)



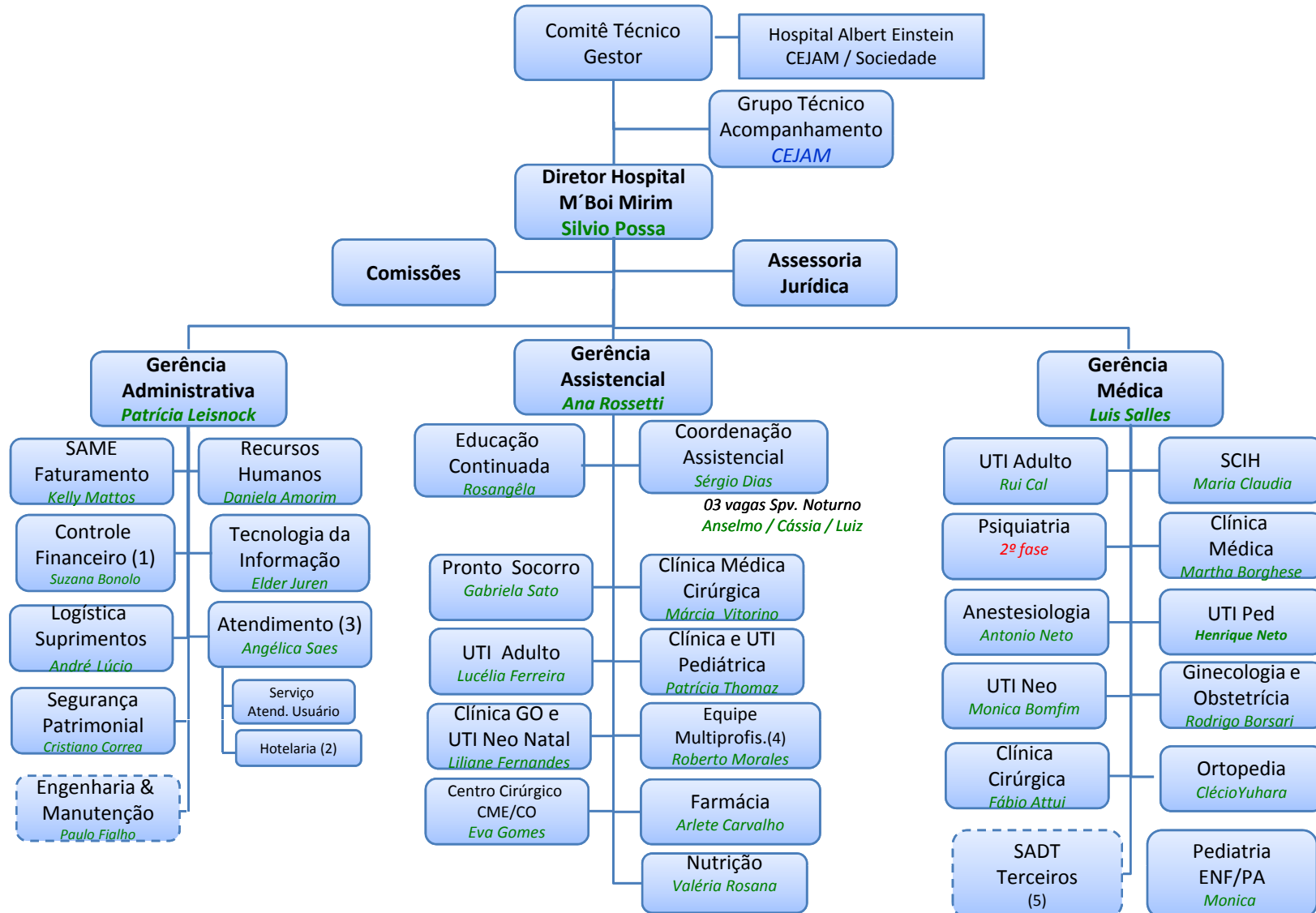
# Administrativo / Operacional



# Atenção Básica de Saúde



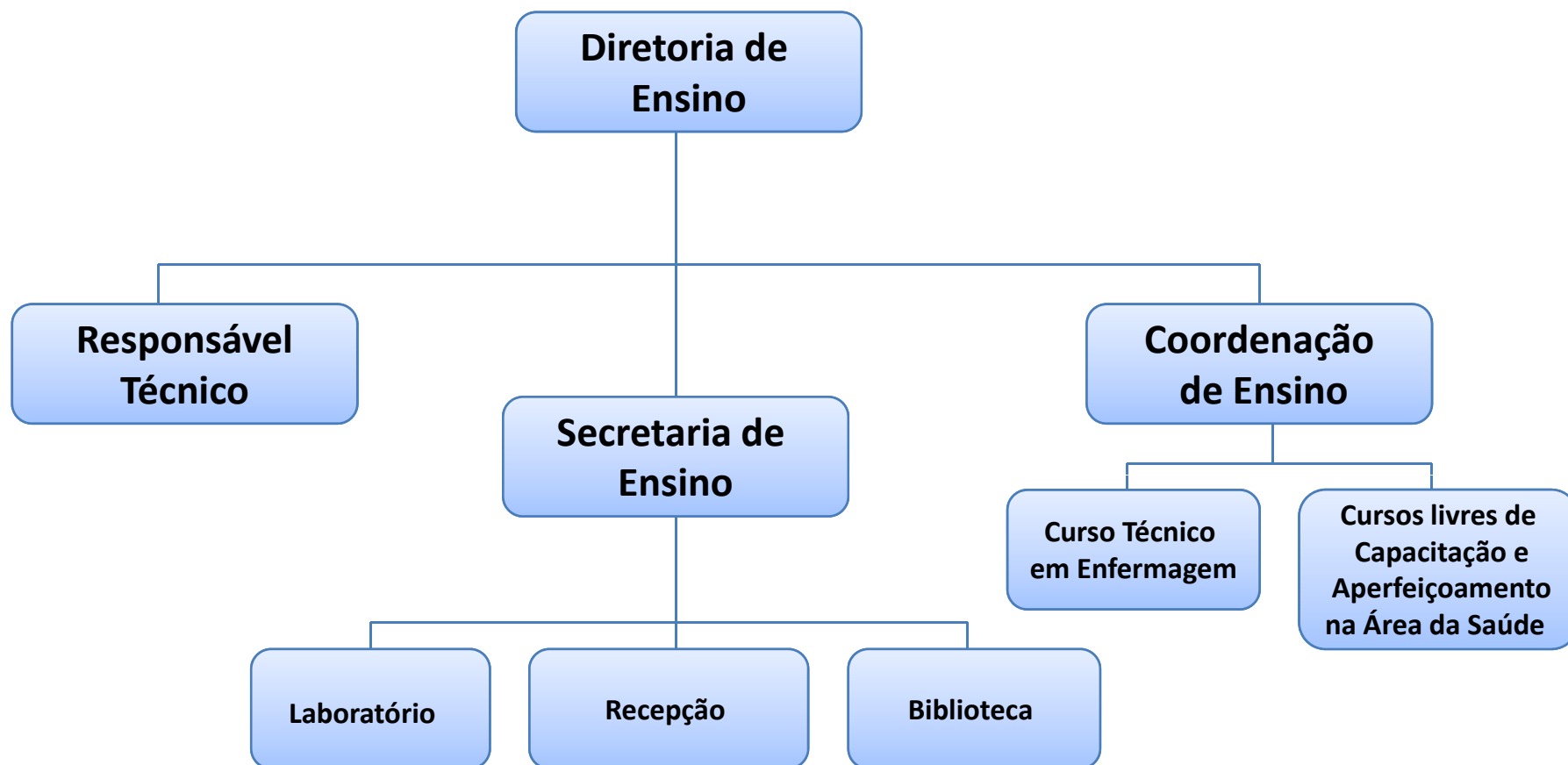
# Hospital M' Boi Mirim



- (1) Faturamento, Contabilidade, Contas a Pagar e Controles
- (2) Hospitalidade, Lavanderia, Higiene e Limpeza
- (3) Recepção, Telefonia e Laudos

     Serviço Terceirizado

- (4) Fisioterapeuta, Psicóloga, Assistente Social, Fonoaudióloga e Terapeuta Ocupacional
- (5) Banco de Sangue, Endoscopia, Diagnóstico por Imagem e Laboratório



# Serviço Social

